



**Electrolux**  
PROFESSIONAL

## Standard Preparation 1800 mm Work Table with Upstand

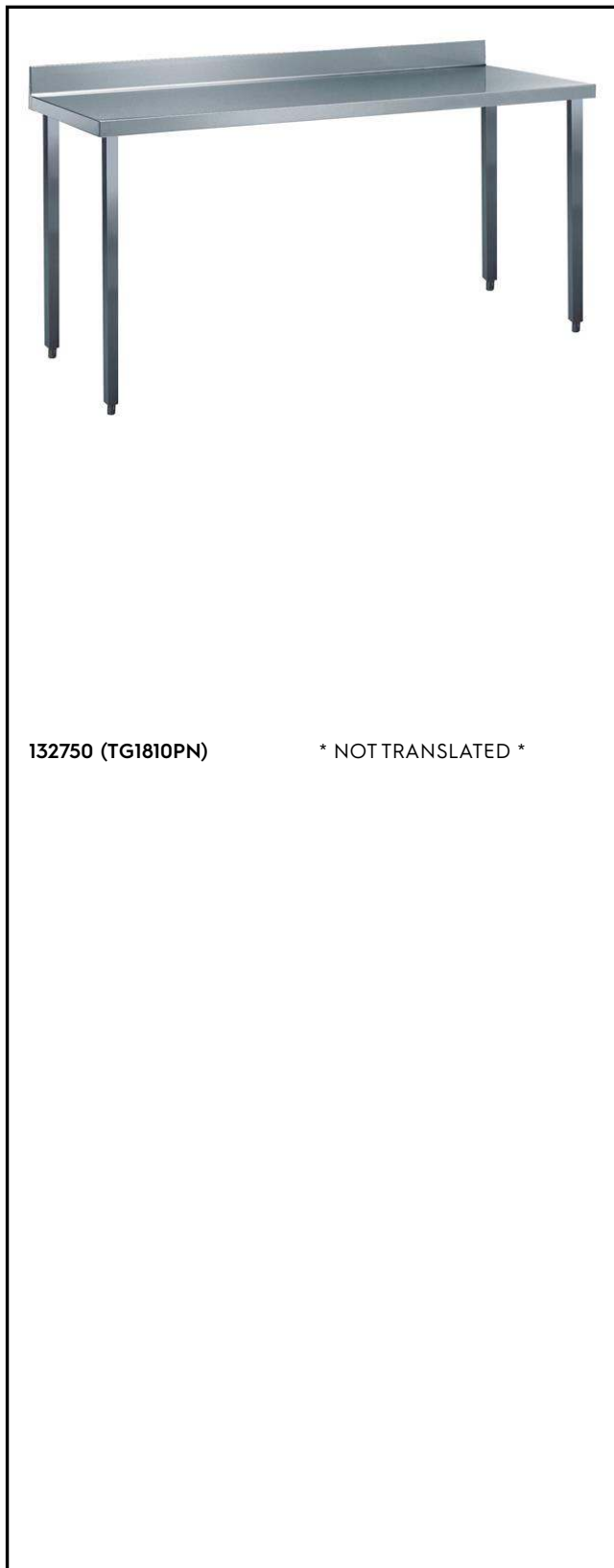
ITEM # \_\_\_\_\_

MODEL # \_\_\_\_\_

NAME # \_\_\_\_\_

SIS # \_\_\_\_\_

AIA # \_\_\_\_\_



132750 (TG1810PN)

\* NOT TRANSLATED \*

### Main Features

- The table can be ordered with the drawer of 400 mm or 600 mm (optional accessory): thanks to the design of the drawer, additional drawers can be added to the first single drawer to create chest of 2, 3 or 4 drawers based on customer's needs.
- Sturdiness, stability and reliability of table accurately tested.

### Construction

- 50 mm worktop in 304 AISI stainless steel, 10/10 in thickness with upturned edges and reinforced waterproof underpanel, incorporates a layer of sound deadening materials.
- Square section legs and 40 mm height-adjustable feet in 304 AISI stainless steel.
- Table top slots into legs without using screws to facilitate installation.
- 400 or 600 mm wide single drawer, chest of 4 drawers, lower shelf, three-sided underframe and set of castors as alternative to the feet, can be fitted as optional on all work tables.
- 40 mm-thick lower shelf (available as optional accessory on some models) slots easily into place at a height of 200 mm from the floor. Lower shelf is compulsory to install the chest of drawers.
- Delivered in knock-down package.
- 100 mm upstand with 10 mm radiused corner and 13 mm deep.

### Optional Accessories

- LOWER SHELF FOR 1800 MM TABLES PNC 855148 ☐
- - NOT TRANSLATED - PNC 855150 ☐
- 3-SIDED UNDERFRAME FOR 1800 MM TABLES PNC 855155 ☐
- - NOT TRANSLATED - PNC 855280 ☐
- DRAWER (S/S RUNNERS) 600 MM PNC 855281 ☐
- - NOT TRANSLATED - PNC 855295 ☐
- - NOT TRANSLATED - PNC 855298 ☐

APPROVAL: \_\_\_\_\_



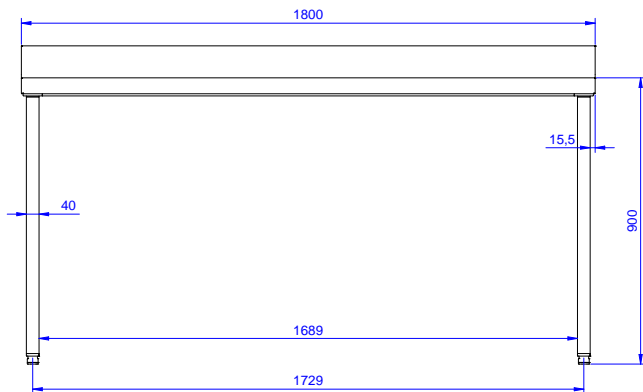
Experience the Excellence  
[www.electroluxprofessional.com](http://www.electroluxprofessional.com)



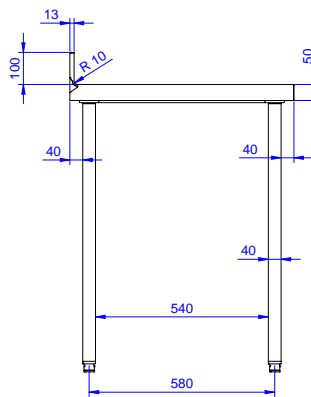
**Electrolux**  
PROFESSIONAL

## Standard Preparation 1800 mm Work Table with Upstand

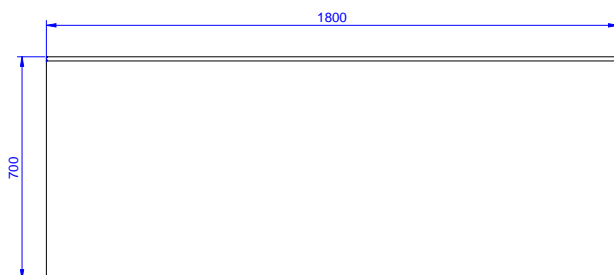
Front



Side



Top



### Key Information:

External dimensions, Width:	1800 mm
132750 (TG1810PN)	
External dimensions, Depth:	700 mm
External dimensions, Height:	1000 mm
Upstand Dimensions, Height:	100 mm
Upstand Dimensions, Depth:	13 mm
Upstand Dimensions, Radius:	R=10
Worktop thickness:	50 mm
Net weight:	54 kg

Standard Preparation  
1800 mm Work Table with Upstand

The company reserves the right to make modifications to the products without prior notice. All information correct at time of printing.

2025.05.22